

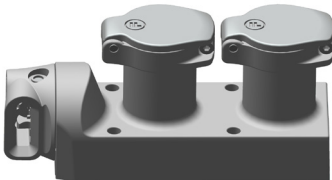
Power and Control Isolation  
Key Exchange  
Door Locks and Actuators

» Double Door Interlock

DMSK2



### Double Door Interlock



The DMSK2 is a robust interlock intended for hygienic areas and suitable for all types of doors.

- Minimal design / crevasse to reduce dirt trapment.
- Fully suited to jet wash & steam cleaning.
- No product handling issues:

*4 head rotation angles with an adjustment of 360° at 90° increments.*

*Two actuator entry points*

- Full stainless steel assembly
- Tamper resistant head mechanism
- Choice of actuator

### Safety Data

Standards	ISO EN14119:2013 EN13849-1:2008 EN13849-2:2012 EN62061:2005
Certifications	CE marked for all applicable directives
Category	Cat. 4, PLc (EN/ISO 13849-1) and SIL3 (EN/IEC 62061)
Functional safety data	B10d 5,000,000

### mGard range

mGard is the ultimate range of robust mechanical trapped key products. Trapped key technology offers purely mechanical access locks (removing the need for expensive wiring). mGard offers an extensive variety of modular interlocking solutions. Suitable for use in applications up to SIL3 (EN/IEC 62061), Category 4 and PLc (EN/ISO 13849-1), mGard is ideal for use in harsh environments and is tested to 1,000,000 operations.

### Article Codes

N° of Locks (Full Stainless Steel)

Part N°

2

DMSK2

Lock Type

Key and lock types must be specified separately

Actuator Type

Actuator type must be specified separately

### Technical Specification

Housing Materials Body	Full stainless steel
Head	Full stainless steel
Internals	Full stainless steel
Lock Mechanism	CLS or MLS lock types are full stainless steel
Key	Stainless steel (selected separately)

### Dimensional Drawing

